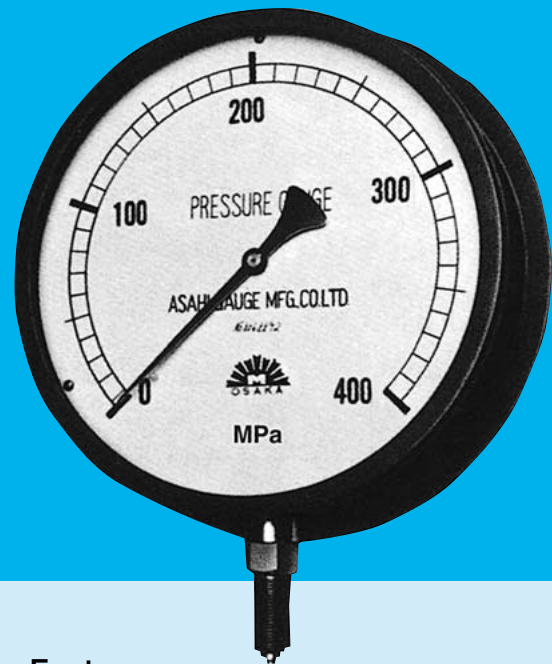
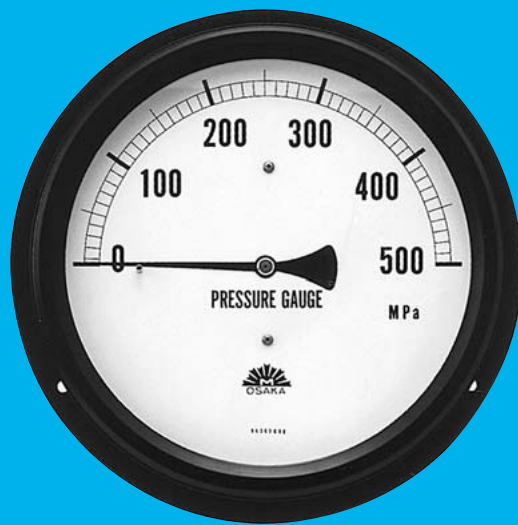


Super-High Pressure Gauges

SUPER-HIGH PRESSURE GAUGES



Outline

The maximum pressure measurable on aneroid pressure gauges are stipulated to be 200 MPa by the Measurement Law. Requirements in industry, however, are far higher than that. To answer the advanced needs in industry, we have produced these pressure gauges for very high pressure measuring. Reliable accuracy and outstanding durability are just what these gauges are for at your factory.

Features

- Selected materials and the unique manufacturing method ensure stable accuracy and superb durability for these gauges.
- An electric contact may be built into any one of these gauges.
- The vibration-proof type includes oil-sealed gauges with very high vibration resistance.

Standard manufacturing specifications

Model	370			775		776	
Size	150	200		100	150	200	
Type	A	B	D	A	B	A	D
Connection screw	G ¹ / ₂			G ³ / ₄	³ / ₄ -16UNF		
Pressure range (number of divisions, MPa)	200(40)		300(30)	400(40)	500(50)	600(60)	
Wet-part material	SUS316			SUS630	SNCM		
Accuracy				±1.6%F.S.			
Working temperature				- 5~ + 45°C			

* 1 Size 100 gauges are only available with a G¹/₂ connection screw.

* 2 500 and 600 MPa range products are only made in size 200 mm with a scale graduation angle of 180 degrees.



ASAHI GAUGE MFG. CO., LTD.
JAPAN

Coding of model

Coding of model					Description
Model	370				ADC screw cap, painted black
	775				SUS 304 oil-sealed, bayonet
	776				ADC oil-sealed, fixed with screw, painted black
Type of case		A			Type A
		B			Type B
		D			Type D
Connection screw			4		G ¹ / ₂
			G		G ³ / ₄
			X		³ / ₄ -16UNF
Size			5		100
			8		150
			9		200

Outside dimensions

Oil-sealed, Model 775

Type A

Size	D	a	b
100	118	20	53
150	165	22	53

Oil-sealed, Model 776

Type A

Type D

Size	D	D4	a	b	w
200	250	208	32	91	65

Screw cap, Model 370

Type A

Type D

Size	D	D1	D4	a	b	w
150	164	164	154	30	51	55
200	219	240	203	45	70	65

Type A · B

Size	D	D1	a	b	d
150A	164		20	52	
150B	164	178	23	55	5.5
200A	219		27	70	
200B	219	235	28	71	5.5

Oil-sealed, Model 775

Type B

Size	D	D1	a	b
100	118	128	20	53.5
150	165	178	24	55

Note: These specifications may be changed for improvements without notice.

